

COMFORT COLORS®



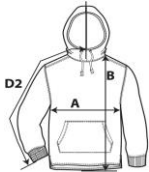
1535

Adult French Terry Scuba Hoodie



DETAILS

Weight	237.0 G/SqM
Content	100% ring spun cotton
Yarn Count	31/1
Features	Soft-washed garment-dyed fabric Scuba hood with colour-matched flatcord 1x1 rib on cuffs Twill taped back neck Rolled forward shoulder Twill label Joker label Pouch pocket Twin-needle bottom hem with side vents and drop tail Twin-needle neck, shoulder, armhole and cuffs
Sizes	S - 3XL
Case Packs	S - 3XL 12 PIECES
Colours	8
SKU's	48



SPECIFICATIONS

Centimeters	Toi-	Toi+	S	M	L	XL	2XL	3XL
Chest (A)	1.905	1.905	50.800	55.880	60.960	66.040	71.120	76.200
Length from HPS (B)	2.540	2.540	72.390	74.930	77.470	80.010	82.550	85.090
Inches	Toi-	Toi+	S	M	L	XL	2XL	3XL
Chest (A)	0.750	0.750	20.000	22.000	24.000	26.000	28.000	30.000
Length from HPS (B)	1.000	1.000	28.500	29.500	30.500	31.500	32.500	33.500

S-3XL

COLOURS	Code	Comments
Blue Jean	03P	
Chalky Mint	09P	
Crimson	12P	
Flo Blue	16P	
Lagoon Blue	12D	
Pepper	34P	
True Navy	18R	
Watermelon	41P	

CHANGES

Total Net Change 0 SKU's

PIGMENT DYE REFERS TO WASHED DOWN COLOURS THAT CONTINUE TO SOFTEN AND AGE WITH WASHING. PIGMENTS ARE INSOLUBLE COLOUR PARTICLES ATTACHED TO THE SURFACE OF CLOTH USING A BINDING AGENT. SLIGHT SHADE VARIATIONS ARE INHERENT IN THE PIGMENT DYE PROCESS.

DUE TO THE NATURE OF THE GARMENT DYING PROCESS, PIGMENT DYED GOODS SHOULD ALWAYS BE WASHED SEPARATELY BEFORE WEARING TO AVOID BLEEDING ISSUES.