

# American Apparel®



**8369W**

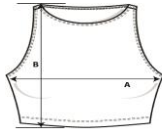
**Women's Cotton Spandex Crop Tank**



**DETAILS**

**Weight** 185.0 G/SqM  
**Content** 93% Ring Spun Combed Cotton, 7% Elastane  
**Features** 0.64 cm double-needle neckline and armholes hem  
 Form-fitting  
 1.91 cm double-needle bottom hem  
 Side seam  
 Double-satin razor label

**Sizes** XS-L  
**Case Packs** XS-L 3 DOZEN  
**Colours** 4  
**SKU's** 16



**SPECIFICATIONS**

Centimeters	Tol-	Tol+	XS	S	M	L
<b>Chest (A)</b>	0.953	0.953	30.798	33.338	35.878	38.418
<b>Length from HPS (B)</b>	0.953	0.953	35.560	36.830	38.100	39.370
Inches	Tol-	Tol+	XS	S	M	L
<b>Chest (A)</b>	0.375	0.375	12.125	13.125	14.125	15.125
<b>Length from HPS (B)</b>	0.375	0.375	14.000	14.500	15.000	15.500

**XS-L**

COLOURS	Code	Comments
Black	Z36	
Heather Grey	18Z	87% Cotton, 8% Spandex, 5% Polyester
Menthe	826	
White	Z00	

**CHANGES**

Total Net Change 0 SKU's