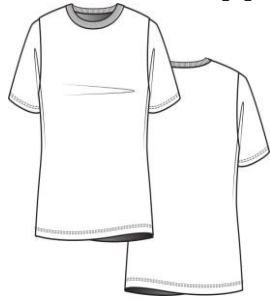


American Apparel®



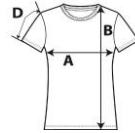
PL301W

Women's Sublimation Short Sleeve T-Shirt



DETAILS

Weight 153.0 G/SqM
Content 100% Polyester
Yarn Count 30/1
Features Shoulder-to-shoulder tape and 1.91 cm seamed collar
 2.22 cm double-needle sleeve and bottom hem
 Side seam
 Double-satin razor label
Sizes S-2XL
Case Packs S-2XL 3 DOZEN
Colours 1
SKU's 5



SPECIFICATIONS

	Tol-	Tol+	S	M	L	XL	2XL
Centimeters							
Chest (A)	1.270	1.270	42.863	45.403	47.943	50.483	53.023
Length from HPS (B)	1.270	1.270	64.770	66.040	67.310	68.580	69.850
Sleeve length (Center cap) (D)	0.635	0.635	18.733	19.368	20.003	20.638	21.273
Inches							
Chest (A)	0.500	0.500	16.875	17.875	18.875	19.875	20.875
Length from HPS (B)	0.500	0.500	25.500	26.000	26.500	27.000	27.500
Sleeve length (Center cap) (D)	0.250	0.250	7.375	7.625	7.875	8.125	8.375

S-2XL

COLOURS	Code	Comments
White	Z00	

CHANGES

Total Net Change 0 SKU's